



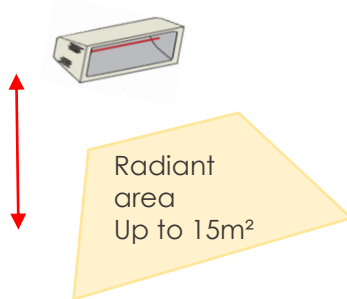
Helios Seaside
2000 watt heater
690045



- Effective - Short wavelength light warms the person, not the room
- Efficient - Ideal for open spaces where conventional heating is wasted on heating air that rises to the ceiling
- Aesthetic - illuminates with a gentle glow
- Stylish - curved lamp housing is adaptable to any modern décor
- Robust - for coastal areas with exposure to sea air
- Long life - lamps run up to 5,000 hours

Helios Seaside
Specification:

Working height
2.2 – 2.5 m



2000 watt heater

Housing: 50 x 23 x 16 cm, 4.5 kg

Stainless steel housing, IP23

Robax® high emissivity glass front

Working height: 2.2- 2.5 m

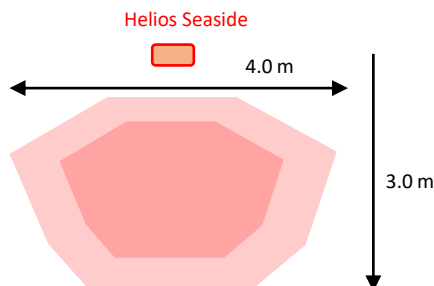
For warming area: up to 15m²

Includes 3 m cable

Short bracket for wall mount

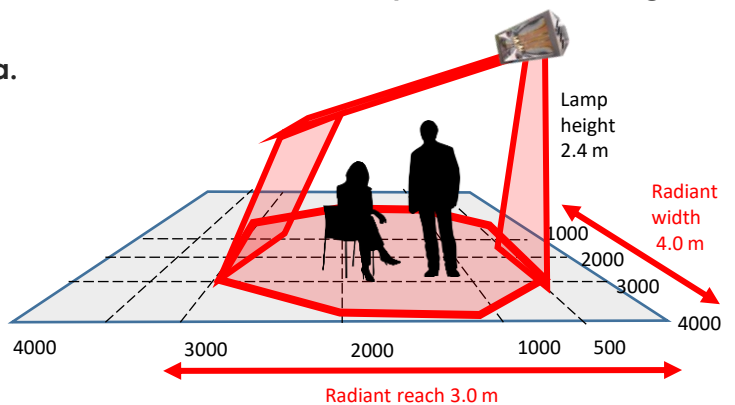
Helios Seaside Radiant Range:

Typical radiant area for an outdoor area.



For an open outdoor area with no roof, radiant output is reduced.

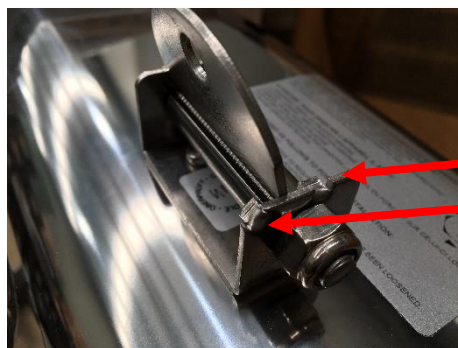
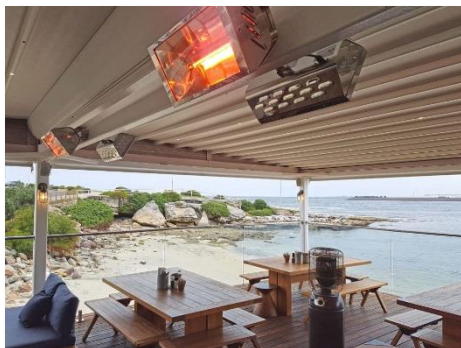
Seaside radiant output is like a flood light.



Radiant output has a strong centre that tapers off at the edges. There is no heat directly below the heater.

Heater Mounting Options:

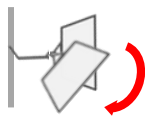
Wall mount 30-45°



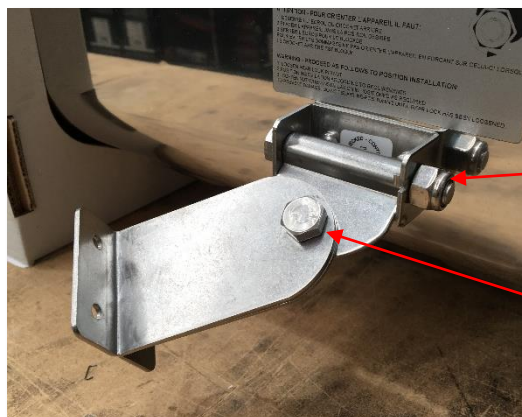
Heater bracket installed between upper and lower tabs.

Adjusting tilt and swivel angles:

Tilt range 0 - 45°



Swivel range - 30° to + 30°



Tighten heater bolt to lock heater at desired angle.

Tighten bracket bolt to fix swivel angle.

Standard Mounting brackets:

Helios Seaside is usually installed with the double short wall bracket:



Short wall brackets are included in the box .



Installing the heater bracket:

The heater bracket is installed with the supplied long M8 bolt (Use 13 mm spanners).



Heater bracket is bolted to the mounting bracket with the supplied short M8 bolt (use 13 mm spanners).

Helios Seaside can be mounted back-to-back

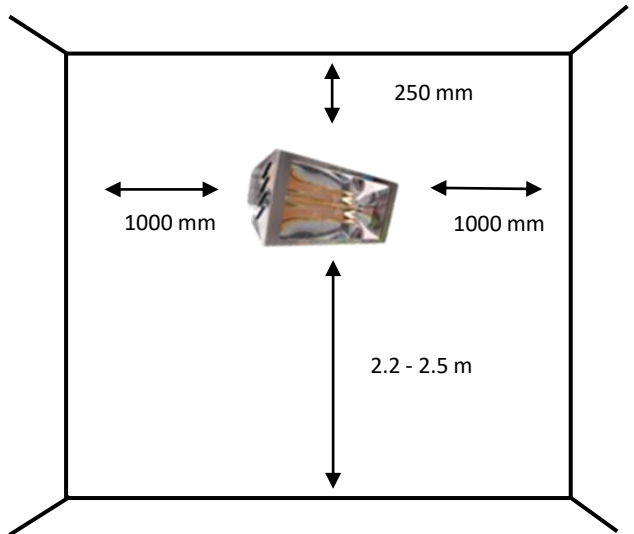


Replacement Lamp

IP20 Infracalor
2000 watt lamp:
690253



Helios Seaside Clearances



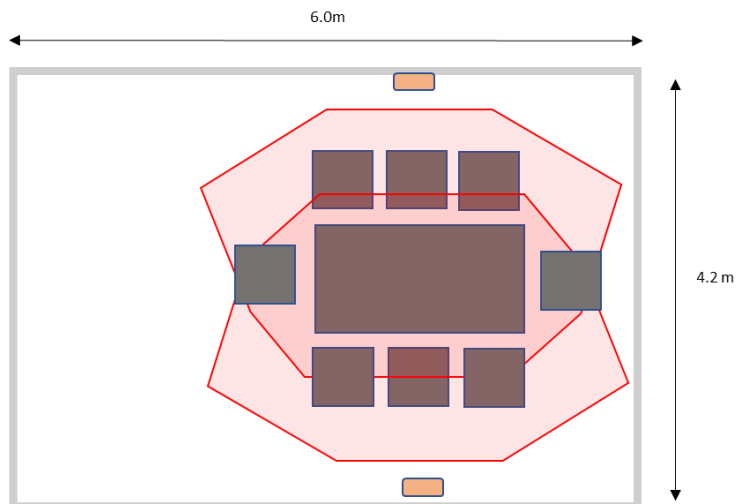
Locating the heaters for optimum effect:

Draw floor plan to scale including the targeted "zones" of dining table and / or lounge suite.

Overlay floor plan with heater radiant range to ensure the target zone will be serviced.

Typical radiant range shown (3.0 m reach and 4.0 m width) is for an outdoor area with a roof and closed in on 3 sides.

For an outdoor area with no roof and open on all sides, radiant range is reduced.



Electrical Requirements:

Power Supply:

Each Heliosa 2000 watt heater has a running current of 8.33 amps.
Halogen lamps have an in-rush current on start up,
allow an additional 20% capacity on circuit breaker.
For a single heater, supply power from a 16 amp circuit.
For two heaters, use individual circuits or supply both via a 20 amp circuit.

Power Connection:

We recommend heater cable be plugged into a socket to allow easy removal for cleaning or maintenance.



Power outlet to be offset from heater.

Regulations require the power outlet to be offset 200 mm away from the heater.

Heater cable should be cut to length as bundling is not permitted.



Do not bundle heater cables.

Electrical Accessories:

Timer [0-30 min]

Infresco soft start electronic timer (4 kW) :
690501



Power controllers [recommended when heaters are used indoors or enclosed outdoor areas].

Infresco Power Controller IP65 (4 kW)
Wall mount with control buttons
690505



Infresco Power Controller IP65 (6 kW)
Wall mount with control buttons
690506



Optional Remote Control [suits Infresco Power controller 4kW 690505 only]

Star Progetti Star 6 Power Controller IP65 (6 kW)
Wall mount with toggle button and remote
690351A



Star Progetti Star 7 Power Controller with Bluetooth IP65 (4.4 kW) Wall mount with remote and phone control
690356



Supplied in Australia by SBH Solutions/Infrared Australia, 3 Ballantyne Street, Magill SA 5072 / PHONE : [08] 7122 1114
EMAIL : infraredheating@sbhsolutions.com.au / www.infraredaustralia.com.au